

# DO I NEED TO SEE A HEALTHCARE PROVIDER? FOR UT STUDENTS COVID-19 (Coronavirus)

## COVID-19 SYMPTOMS\* TYPICALLY INCLUDE:

- 100.0°F or higher fever or feeling feverish/chills

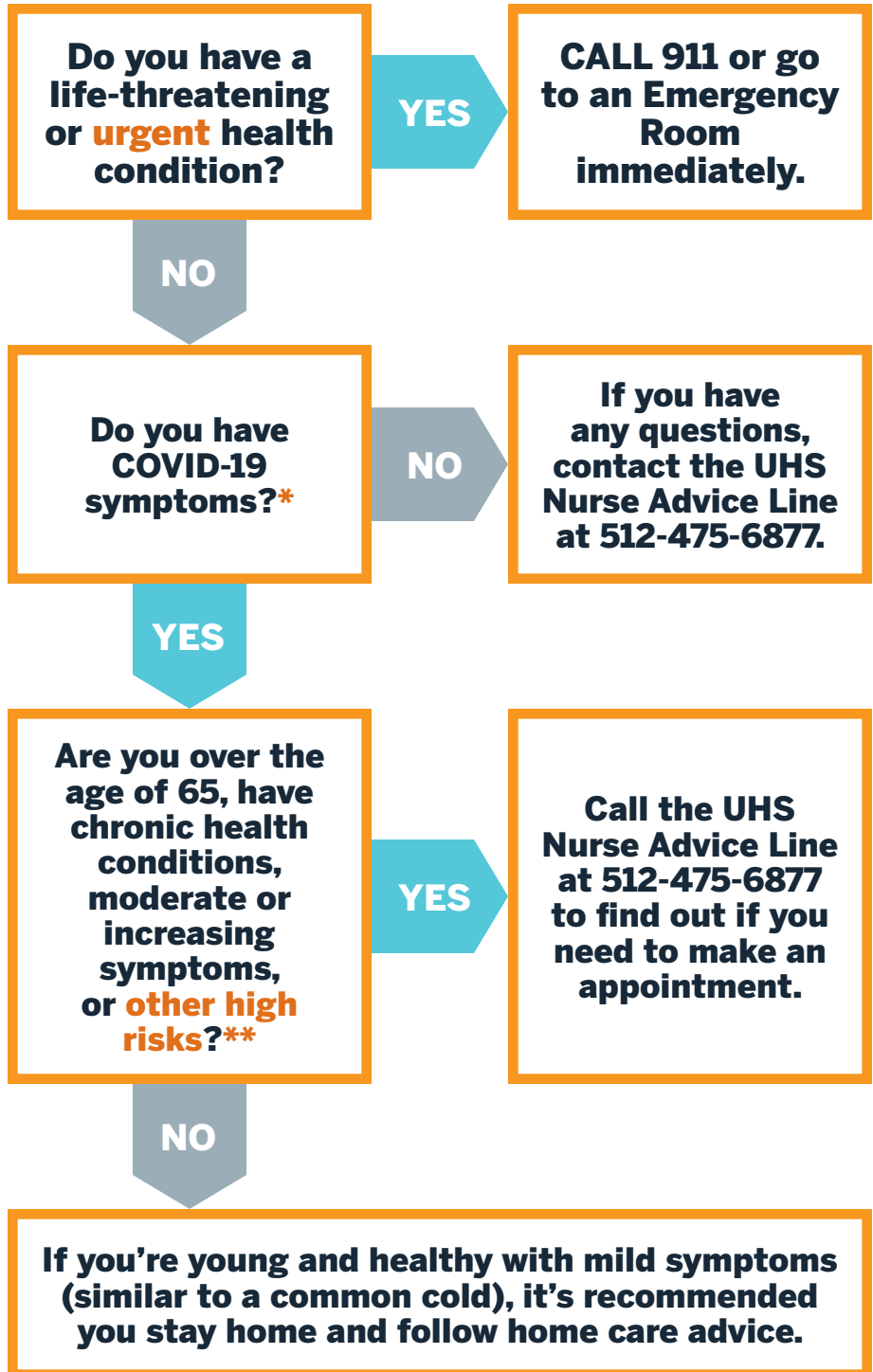
### AND one or more:

- Cough
- Sore throat
- Headaches and/or body aches
- Difficulty breathing or shortness of breath
- Fatigue
- Runny or stuffy nose

**If you have any questions or concerns, call the UHS Nurse Advice Line at 512-475-6877.**

## HIGH RISK\*\* PATIENTS INCLUDE:

- Close contact with someone known to have COVID-19
- Adults 65 years and older
- Persons with chronic pulmonary (including asthma), cardiovascular (except hypertension alone), renal, hepatic, hematological (including sickle cell disease), and metabolic disorders (including diabetes mellitus), or neurologic and neurodevelopment conditions (including disorders of the brain, spinal cord, peripheral nerve, and muscle such as cerebral palsy, epilepsy (seizure disorders), stroke, intellectual disability (mental retardation, moderate to severe developmental delay, muscular dystrophy, or spinal cord injury)
- Persons with immunosuppression, including that caused by medications or by HIV infection



UT staff and faculty with UT Select insurance may contact the 24/7 Nurseline provided by Blue Cross Blue Shield 888-315-9473 or seek care from **UT Health Austin, MD Live** or their personal healthcare provider.